

BARCELONA (Spain), 7 May 2026

## REIG JOFRE ADVANCES ITS GROWTH SUPPORTED BY ITS INDUSTRIAL AND BIOTECH EXPANSION

### Q1 2026 key figures

- **Revenue:** €86 million (–2% vs. Q1 2025), impacted by a temporary disruption in Forté Pharma’s supply chain in France and Belgium.
- **Gross margin:** 60%, in line with the previous year.
- **Consolidated EBITDA:** €10 million (+1% vs. Q1 2025), driven by growth in Specialty Pharmacare.
- **Consolidated net profit:** €3 million, €0.6 million below Q1 2025, due to higher financial expenses and asset impairment expected to be recovered over the course of the year.
- **Net financial debt:** €102 million; NFD/EBITDA ratio of 3.3x, stable compared with year-end 2025.
- **Operating milestones:** progress on new production lines, the launch of injectable dalbavancin, and continued progress in the biotechnology integration of Leanbio and Syna Therapeutics.

**REIG JOFRE**, (BME:**RJF**), closed the first quarter of 2026 consolidating its profitability improvement and advancing on its key strategic priorities. EBITDA reached €10 million, up 1% compared with the same period of the previous year, driven by the osteoarticular and dermatology areas.

At the same time, the company continued to execute its roadmap across two distinct areas. On the one hand, it advanced in technological innovation and industrial capabilities, with significant progress in Toledo and Barcelona, as well as in the integration of Leanbio and Syna Therapeutics, strengthening its biotechnology platforms. On the other hand, it reinforced its hospital portfolio and its presence in the anti-infectives therapeutic area with the launch of dalbavancin.

Against this backdrop, revenue amounted to €86 million, down 2% compared with the same period of the previous year, affected by a one-off supply chain disruption at Forté Pharma in France and Belgium, due to a fire in the second half of March. This impact, covered by the company’s insurance policy, is temporary in nature and the affected sales are expected to be transferred to the coming quarters of the year.

### Commissioning of new production capacities

During the first quarter of 2026, REIG JOFRE continued to advance its industrial and technological investment programme, focused on strengthening differentiated capabilities in higher value-added areas, including advanced CDMO services.

From an industrial perspective, the company is progressing as planned in the commissioning of new production lines, with a focus on the new antibiotics manufacturing line in Toledo, the development of the Sterile Area in Barcelona and the construction of Leanbio’s GMP plant. These initiatives will enable the company to increase capacity, improve productivity and strengthen supply reliability in essential healthcare areas, with full capacity expected in the second half of 2026.

Fixed assets amounted to €203 million at the end of the quarter, compared with €199 million at year-end 2025. The evolution includes €2.8 million of industrial investments, €5.7 million in R&D projects, €0.5 million in digital projects and €1.7 million in right-of-use assets, partially offset by €6.5 million of depreciation and amortisation.

These investments consolidate REIG JOFRE's strategy of strengthening a competitive, efficient and sustainable European industrial base, with in-house capabilities in advanced pharmaceutical technologies, antibiotics, injectables and biotechnology.

### Biotechnology integration of Leanbio and Syna Therapeutics

In December 2025, REIG JOFRE increased its stake in Leanbio to 85%, significantly reinforcing its strategic positioning in biotechnology. This transaction marks a relevant milestone in the evolution of the company's business model, expanding its capabilities towards an integrated biopharmaceutical platform spanning the different stages of the value chain: research, design, process development, industrial production and scale-up of biological medicines.

The integration of Leanbio, together with the activity of Syna Therapeutics, enables REIG JOFRE to advance towards a differentiated proposition in the European market, combining development, manufacturing and industrial transfer capabilities for biotechnology products. This positioning strengthens the company's future growth potential in a high value-added segment with significant barriers to entry.

During the first quarter, REIG JOFRE continued to drive its biotechnology platform. Leanbio progressed in the construction of its GMP plant for biotechnology active pharmaceutical ingredients, while Syna Therapeutics continued to advance the development of its biosimilar, which is in clinical phase during 2026.

Capitalised work amounted to €5.7 million in the quarter, mainly related to progress on the biosimilar project.

### Launch of injectable dalbavancin

During the first quarter, REIG JOFRE launched Dalbavancin, a new antibiotic added to its portfolio for the hospital treatment of severe skin and soft tissue infections. Manufactured at the company's Barcelona plant and marketed both through its subsidiaries and B2B agreements, the product is already reaching hospitals and patients in nine European countries.

With this launch, REIG JOFRE strengthens the international reach of its hospital portfolio with a treatment of high clinical value, whose use has grown steadily in recent years due to its ability to reduce hospital stays and healthcare costs.

This progress forms part of the company's strategy to expand its presence in the anti-infectives therapeutic field and strengthen its ability to deliver differentiated solutions in the hospital setting.

### Financial performance

Revenue stood at €86 million, compared with €88 million in Q1 2025. The evolution was affected by the temporary supply chain disruption at Forté Pharma in France and Belgium. The company expects the affected sales to be transferred to the next two quarters of the year.

Gross margin stood at 60%, in line with the previous year, reflecting the stability of the mix and the contribution of higher value-added areas. Grant income linked to the EMINTECH project amounted to €1 million and represented 50% of the expenses associated with the project.

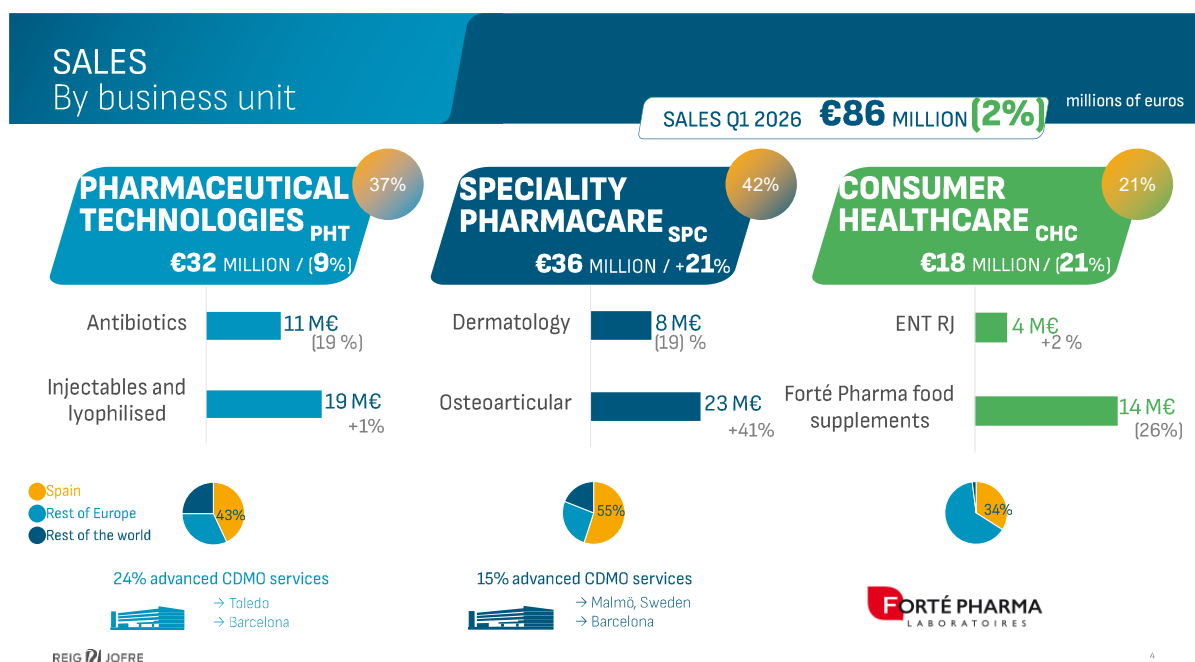
EBITDA reached €10 million, up 1% compared with the first quarter of 2025, mainly driven by the commercial growth of the Specialty Pharmicare area. Consolidated net profit amounted to €3 million, €0.6 million below

Q1 2025, impacted by higher financial expenses and asset impairment that the company expects to recover over the course of the year.

Net Financial Debt remained stable at €102 million, with an NFD/EBITDA ratio of 3.3x, in line with year-end 2025. Gross financial debt amounted to €117 million, of which €91 million corresponds to the business excluding Syna and Leanbio, and €26 million to Syna Therapeutics and Leanbio.

### Performance by division: growth in Specialty Pharmcare and a temporary impact on Consumer Healthcare

In the first quarter of 2026, REIG JOFRE recorded uneven performance across business units, marked by growth in Specialty Pharmcare and the temporary impact on Consumer Healthcare.



- **Pharmaceutical Technologies** reported revenue of €32 million, down 9% on Q1 2025. The unit is progressing through the final phase of its operational transformation, optimising its portfolio, product mix and production capacity to bolster profitability and future growth. The roll-out of the new antibiotic production line in Toledo is proceeding according to plan, with the first sales expected in the second half of the year. In the injectables segment, sales grew by 1%, driven by initial sales of dalbavancin, a new non-penicillin injectable antibiotic.
- **Specialty Pharmcare** reached €36 million, representing a 21% increase compared with Q1 2025. The Osteoarticular division grew by 22%, driven by Droglican® and Condrosan®, which demonstrate the brand’s global strength. In Dermatology, the strong performance of the hair and nails portfolio—with Dexulac® growing by 19% – partially offset the decline in other, less profitable dermatology products. CDMO manufacturing in Sweden doubled sales of higher-value-added products related to Parkinson’s disease, and international sales grew by 5%, including the first direct sales in Slovakia.
- **Consumer Healthcare** stood at €18 million, down 21% on the same period last year, due to a temporary disruption in the supply of Forté Pharma products in France and Belgium. Forté Pharma continues to

strengthen its position as a multi-specialist company, focusing on key segments such as oral rehydration and women's health. Meanwhile, the OTC division grew by 2%, driven by the strong performance of Otocerum.

Receive the **latest news** from listed company REIG JOFRE by registering in its [subscription centre](#)

#### About REIG JOFRE

REIG JOFRE is a pan-European pharmaceutical company with almost a century of history, whose purpose is to universalise the science that matters. It develops, manufactures and markets essential healthcare solutions that support people throughout all stages of life — from daily care and prevention to the most critical medical care — applying scientific rigour and a holistic vision to generate a tangible impact on patients and healthcare systems. The Group is organised into three business units — Pharmaceutical Technologies (hospital injectables and antibiotics), Specialty Pharmacare (dermatology and musculoskeletal health) and Consumer Healthcare (over-the-counter products for wellbeing and prevention, with Forté Pharma) — a structure that enhances synergies between technology, innovation and international expansion. It also acts as an end-to-end CDMO partner, integrating drug substance and drug product to simplify development and manufacturing and accelerate patient access. With more than 1,400 professionals, a direct presence in Europe through eight commercial offices in Spain, Portugal, France, Sweden, the United Kingdom, Belgium, Poland and the Czech Republic, and a broad partner network through licensing and distribution agreements, its solutions reach more than 70 countries. In 2025, it recorded revenue of €331.1 million and EBITDA of €30.4 million. The company is listed on the Spanish Continuous Market under the ticker RJF.

<b>INCOME STATEMENT</b> (thousand euros)	<b>31/03/2026</b>	<b>31/03/2025</b>	<b>V%</b>
<b>Turnover</b>	<b>86.282</b>	<b>87.953</b>	<b>-2%</b>
Procurements	-34.258	-33.968	-1%
Changes in inventories	-637	-1.161	
<b>Gross margin</b>	<b>51.387</b>	<b>52.823</b>	<b>-3%</b>
Work carried out for fixed assets	5.680	472	1104%
Other operating income	1.014	16	6313%
Personnel expenses	-25.345	-23.108	10%
Other operating expenses	-22.789	-20.317	12%
<b>EBITDA</b>	<b>9.948</b>	<b>9.884</b>	<b>1%</b>
Depreciation and amortization	-6.469	-6.117	6%
Govern. grants for non-financial assets and others	266	63	322%
Impairment and results on disposals	-493	-2	
<b>Operating income</b>	<b>3.252</b>	<b>3.829</b>	<b>-15%</b>
Financial result	-621	-71	769%
Results from entities accounted by the equity method	0	551	-100%
<b>Profit before taxes</b>	<b>2.632</b>	<b>4.308</b>	<b>-39%</b>
Income tax	425	-646	-166%
<b>NET RESULT</b>	<b>3.057</b>	<b>3.663</b>	<b>-17%</b>

<b>BALANCE SHEET</b> (thousand euros)	<b>31/03/2026</b>	<b>31/12/2025</b>
Goodwill	26.509	26.495
Other intangible assets	73.395	69.581
Property, plant and equipment	129.534	129.501
Non-current financial assets measured at fair value	887	887
Other non-current financial assets	605	603
Deferred tax assets	12.872	12.185
<b>TOTAL NON-CURRENT ASSETS</b>	<b>243.802</b>	<b>239.252</b>
Inventories	68.844	61.612
Trade and other receivables	68.960	65.285
Current tax assets	4.506	7.006
Other current financial assets	6.917	6.506
Other current assets	5.477	4.525
Cash and cash equivalents	14.663	10.500
<b>TOTAL CURRENT ASSETS</b>	<b>169.367</b>	<b>155.434</b>
<b>TOTAL ASSETS</b>	<b>413.169</b>	<b>394.686</b>
Share capital	41.110	41.110
Share Premium	19.000	19.000
Treasury shares	-2.838	-2.836
Reserves	162.489	156.880
Own equity instruments	174	174
Profit attributable to the parent company	2.926	5.021
Exchange differences	-1.697	-1.389
Other comprehensive income	112	112
<b>Equity attributable to parent company</b>	<b>221.275</b>	<b>218.072</b>
Non-controlling interests	2.295	2.378
<b>TOTAL EQUITY</b>	<b>223.571</b>	<b>220.450</b>
Capital grants	5.598	5.863
Provisions	500	500
Financial liabilities with credit institutions	51.419	43.133
Lease liabilities	15.938	15.333
Other financial liabilities	5.001	5.969
Deferred tax liabilities	2.239	2.319
<b>TOTAL NON-CURRENT LIABILITIES</b>	<b>80.695</b>	<b>73.117</b>
Provisions	20	0
Financial liabilities with credit institutions	30.688	27.302
Lease liabilities	5.226	5.736
Other financial liabilities	8.604	14.137
Liabilities from contracts with customers	2.012	2.705
Trade and other payables	57.593	45.775
Current tax liabilities	4.699	5.315
Other current liabilities	61	149
<b>TOTAL CURRENT LIABILITIES</b>	<b>108.904</b>	<b>101.119</b>
<b>TOTAL EQUITY AND LIABILITIES</b>	<b>413.169</b>	<b>394.686</b>