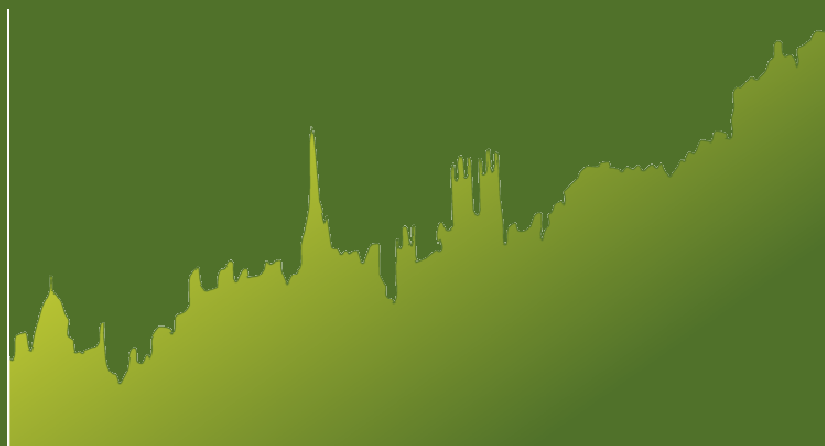




**IBERDROLA**  
**RENOVABLES**

**Investors'**  
**Day 2008**

Gleneagles, Scotland



# Disclaimer and legal notice



## *DISCLAIMER*

*This document has been prepared by Iberdrola Renovables, S.A. (the "Company") exclusively for use during the first Iberdrola Renovables Investors Day. As a consequence thereof, this document may not be disclosed or published, nor used by any other person or entity, for any other reason without the express and prior written consent of Iberdrola Renovables, S.A.*

*Iberdrola Renovables, S.A. does not assume liability for this document if it is used with a purpose other than the above.*

*The information and any opinions or statements made in this document have not been verified by independent third parties; therefore no express or implied warranty is made as to the impartiality, accuracy, completeness or correctness of the information or the opinions or statements expressed herein. Neither Iberdrola Renovables, S.A. nor its subsidiaries or other companies of the Iberdrola Group or its affiliates assume liability of any kind, whether for negligence or any other reason, for any damage or loss arising from any use of this document or its contents.*

*Neither this document nor any part of it constitutes a contract, nor may it be used for incorporation into or construction of any contract or agreement. Information in this document about the price at which securities issued by Iberdrola Renovables, S.A. have been bought or sold in the past or about the yield on securities issued by Iberdrola Renovables, S.A. cannot be relied upon as a guide to future performance.*

## *IMPORTANT INFORMATION*

*This document does not constitute an offer or invitation to purchase or subscribe shares, in accordance with the provisions of the Spanish Securities Market Law (Law 24/1988, of July 28, as amended and restated from time to time), Royal Decree-Law 5/2005, of March 11, and/or Royal Decree 1310/2005, of November 4, and its implementing regulations.*

*In addition, this document does not constitute an offer of purchase, sale or exchange, nor a request for an offer of purchase, sale or exchange of securities, nor a request for any vote or approval in any other jurisdiction.*

*In particular, this communication does not constitute an offer to purchase, sell or exchange or the solicitation of an offer to purchase, sell or exchange any securities. The shares of Iberdrola Renovables, S.A. may not be offered or sold in the United States of America except pursuant to an effective registration statement under the Securities Act or pursuant to a valid exemption from registration.*

## *FORWARD-LOOKING STATEMENTS*

*This communication contains forward-looking information and statements about Iberdrola Renovables, S.A., including financial projections and estimates and their underlying assumptions, statements regarding plans, objectives and expectations with respect to future operations, capital expenditures, synergies, products and services, and statements regarding future performance. Forward-looking statements are statements that are not historical facts and are generally identified by the words "expects," "anticipates," "believes," "intends," "estimates" and similar expressions.*

*Although Iberdrola Renovables, S.A. believes that the expectations reflected in such forward-looking statements are reasonable, investors and holders of Iberdrola Renovables, S.A. shares are cautioned that forward-looking information and statements are subject to various risks and uncertainties, many of which are difficult to predict and generally beyond the control of Iberdrola Renovables, S.A., that could cause actual results and developments to differ materially from those expressed in, or implied or projected by, the forward-looking information and statements. These risks and uncertainties include those discussed or identified in the documents sent by Iberdrola Renovables, S.A. to the Comisión Nacional del Mercado de Valores, which are accessible to the public.*

*Forward-looking statements are not guarantees of future performance. They have not been reviewed by the auditors of Iberdrola Renovables, S.A. You are cautioned not to place undue reliance on the forward-looking statements, which speak only as of the date they were made. All subsequent oral or written forward-looking statements attributable to Iberdrola Renovables, S.A. or any of its members, directors, officers, employees or any persons acting on its behalf are expressly qualified in their entirety by the cautionary statement above. All forward-looking statements included herein are based on information available to Iberdrola Renovables, S.A. on the date hereof. Except as required by applicable law, Iberdrola Renovables, S.A. does not undertake any obligation to publicly update or revise any forward-looking statements, whether as a result of new information, future events or otherwise.*

# Disclaimer and legal notice



## **DISCLAIMER**

*This document has been prepared by Iberdrola Renovables, S.A. (the "Company") in connection with the presentation of financial results of the first semester of the 2008 fiscal year.*

*The information and any opinions or statements made in this document have not been verified by independent third parties; therefore no express or implied warranty is made as to the impartiality, accuracy, completeness or correctness of the information or the opinions or statements expressed herein. Neither Iberdrola Renovables, S.A. nor its subsidiaries or other companies of the Iberdrola Group or its affiliates assume liability of any kind, whether for negligence or any other reason, for any damage or loss arising from any use of this document or its contents.*

*Neither this document nor any part of it constitutes a contract, nor may it be used for incorporation into or construction of any contract or agreement.*

## **IMPORTANT INFORMATION**

*This document does not constitute an offer or invitation to purchase or subscribe shares, in accordance with the provisions of the Spanish Securities Market Law (Law 24/1988, of July 28, as amended and restated from time to time), Royal Decree-Law 5/2005, of March 11, and/or Royal Decree 1310/2005, of November 4, and its implementing regulations.*

*In addition, this document does not constitute an offer of purchase, sale or exchange, nor a request for an offer of purchase, sale or exchange of securities, nor a request for any vote or approval in any other jurisdiction.*

*In particular, this communication does not constitute an offer to purchase, sell or exchange or the solicitation of an offer to purchase, sell or exchange any securities. The shares of Iberdrola Renovables, S.A. may not be offered or sold in the United States of America except pursuant to an effective registration statement under the Securities Act or pursuant to a valid exemption from registration.*

# ***Wind Performance and O&M***

**Henar Estévez, Head of Wind Research**  
**Joaquín Santamaría, Director of Operations**  
**Gleneagles, July 3<sup>th</sup> 2008**

# Agenda



---

## Methodology for Wind Resource Assessing

---

### Wind Variability

### O&M Model and OPEX

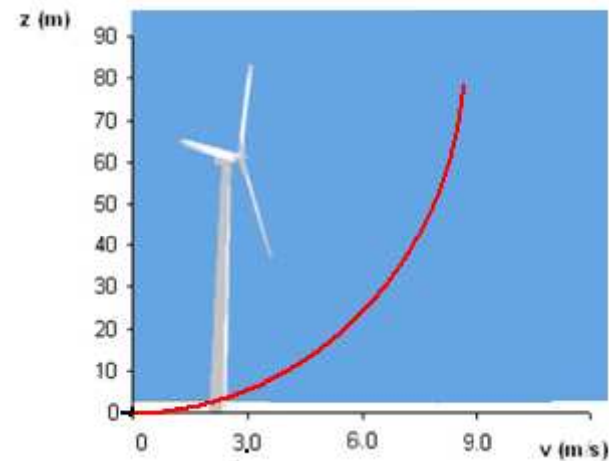
# Methodology for Wind Resource Assessing

Wind conditions varies...

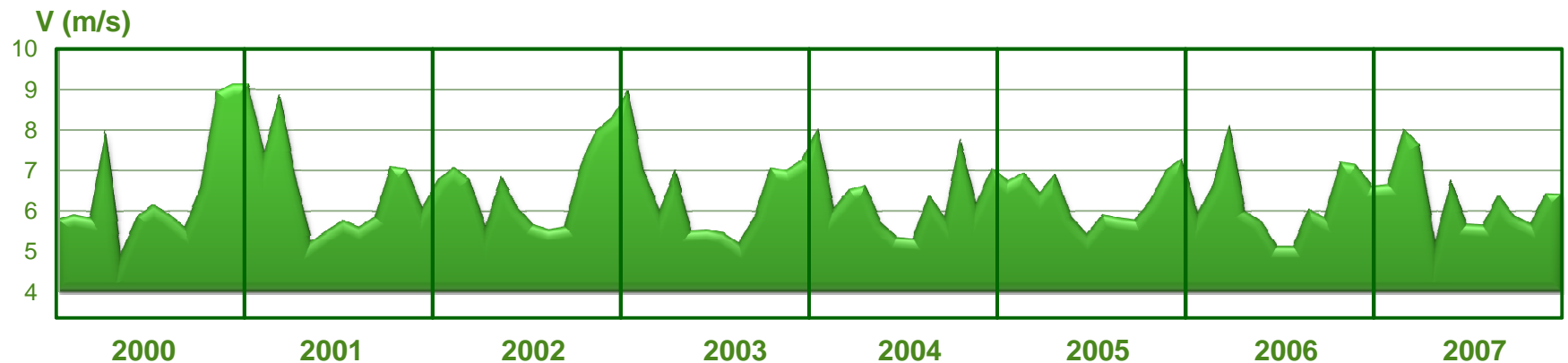
... between areas



... with heights



... in time



# Methodology for Wind Resource Assessing

**Good information is required...**

... high quality equipment



... reliable data

... measurement during long period



... seasonal and annual variability

... measurement heights



... exact wind conditions

... representative towers

**... to reduce the uncertainty in the wind resource studies**

# Methodology for Wind Resource Assessing



**Applying the most advanced techniques ...**

**... the most reliable process**

**... cutting-edge meteorological models**

**... internal control procedure**

**High capabilities all over the chain ...**

**More than 60 employees and more 100 outsourcing people**

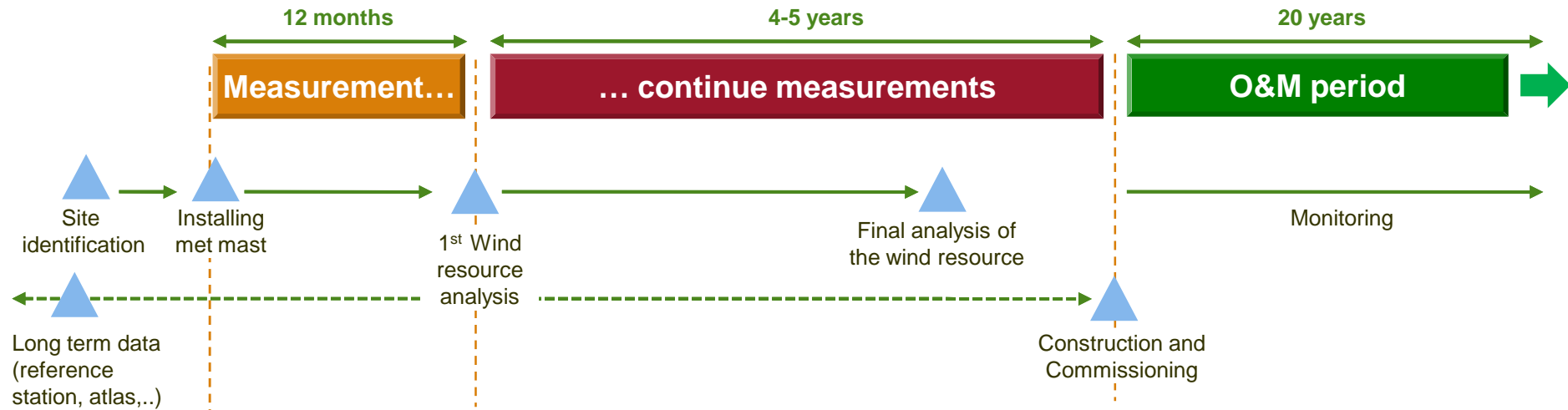
**... experience and standard procedure all over the world**

**... in-house management and know-how**

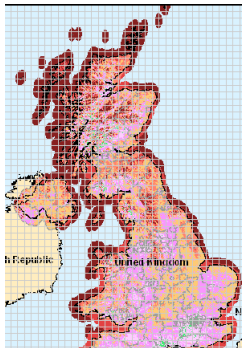
**... size according local needs, managing more than 54,000 MW pipeline  
and information from more than 1,000 met**

# Methodology for Wind Resource Assessing

Wind measurements take as average 3-4 years



And take different source of available data



Wind Atlas



Site Stations



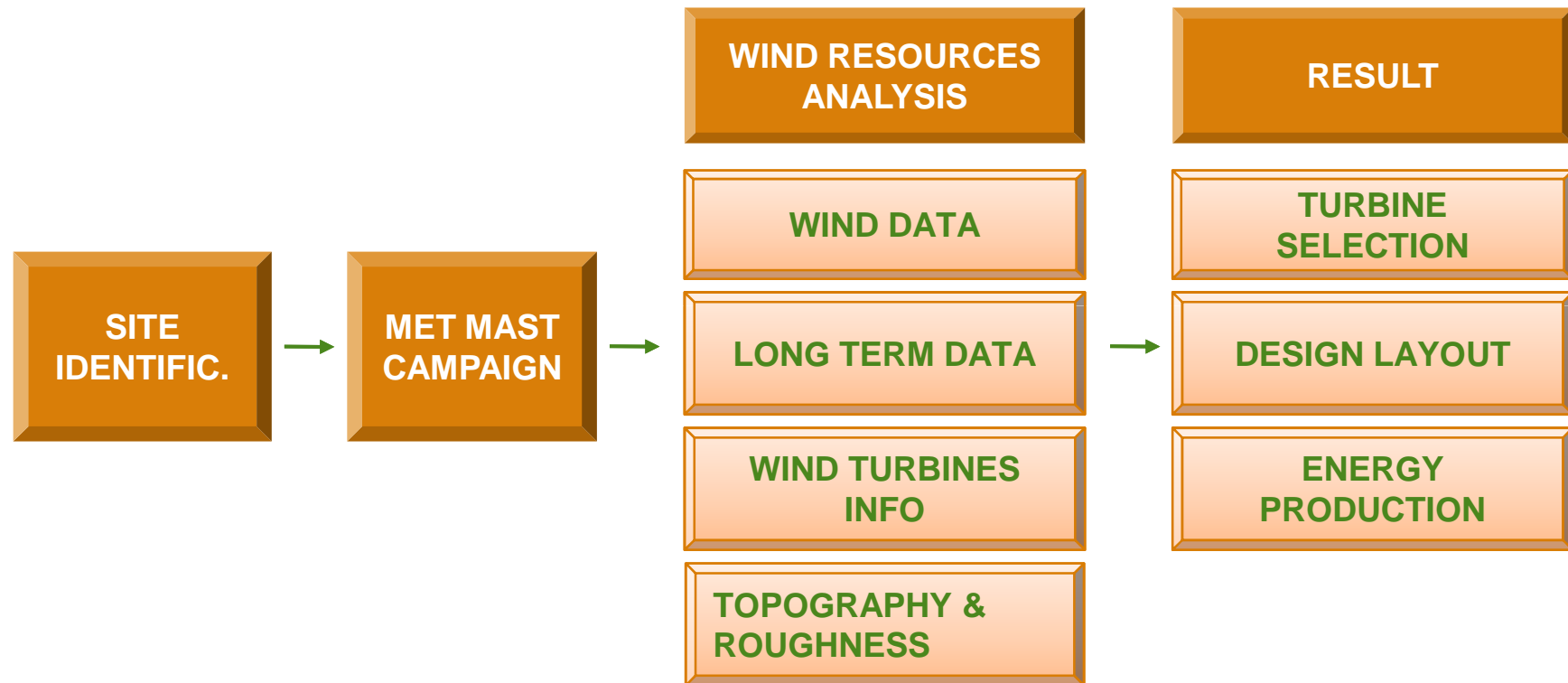
Reference  
Stations



Mesoscale info

# Methodology for Wind Resource Assessing

Proper procedures assure homogeneity in the data treatment and estimation of wind resource...



... 1% variation in the load factor entail between 0.4-0.8% of IRR

# Methodology for Wind Resource Assessing

All the procedures are focused on quality and reliability ...

## Quality

Monthly measurement review

Equipment calibration

Three internal control levels

Uncertainties analysis

## Reliability

Compare methodology with independent experts

IEC standards applies to studies

Site validation by the Wind Turbine suppliers

Monitoring wind farm energy productions

.... and a wide R&D projects portfolio to implement any improvement

# Agenda



## **Methodology for Wind Resource Assessing**

---

### **Wind Variability**

---

### **O&M Model and OPEX**

# Wind variability

## Variability of the wind ...

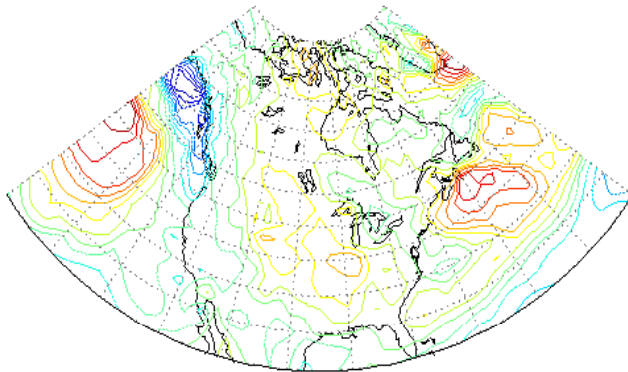
...is an intrinsic feature of the wind

...depends on the analyzed time scale

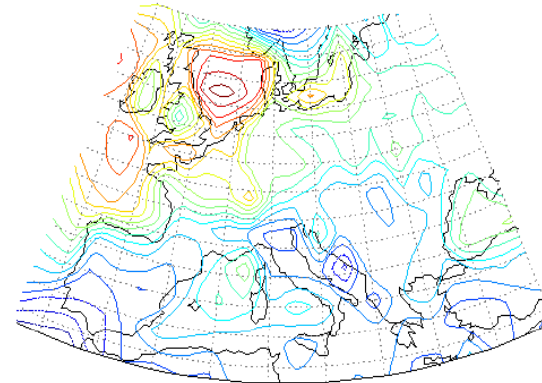
... the longer the time scale, the lower the variability

# Wind variability

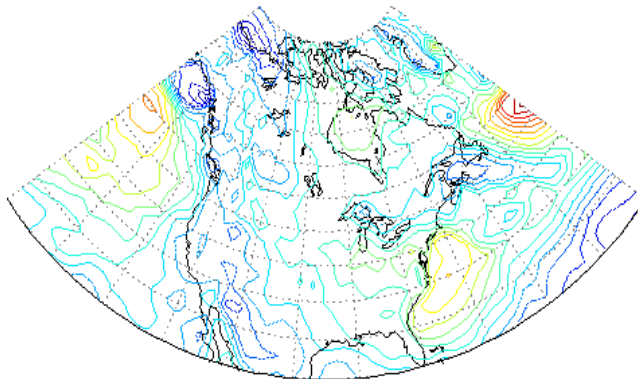
Energy daily variability can be up to 100%



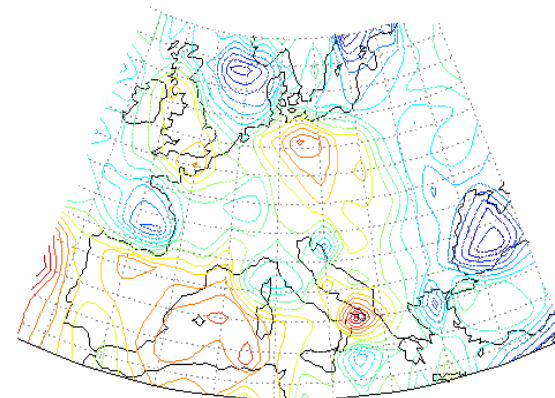
1-jan-07



1-jan-06



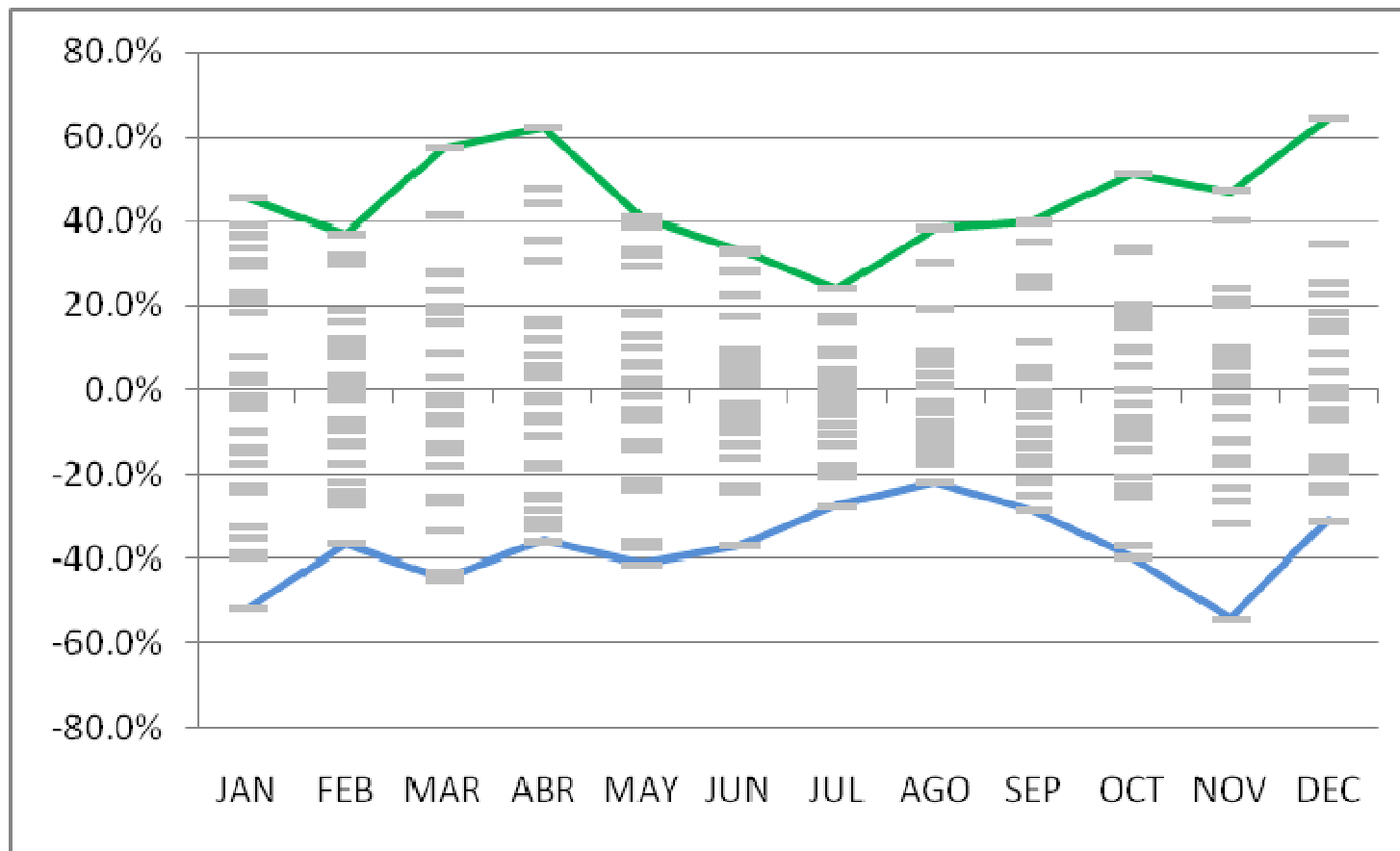
2-jan-07



1-jan-07

# Wind variability

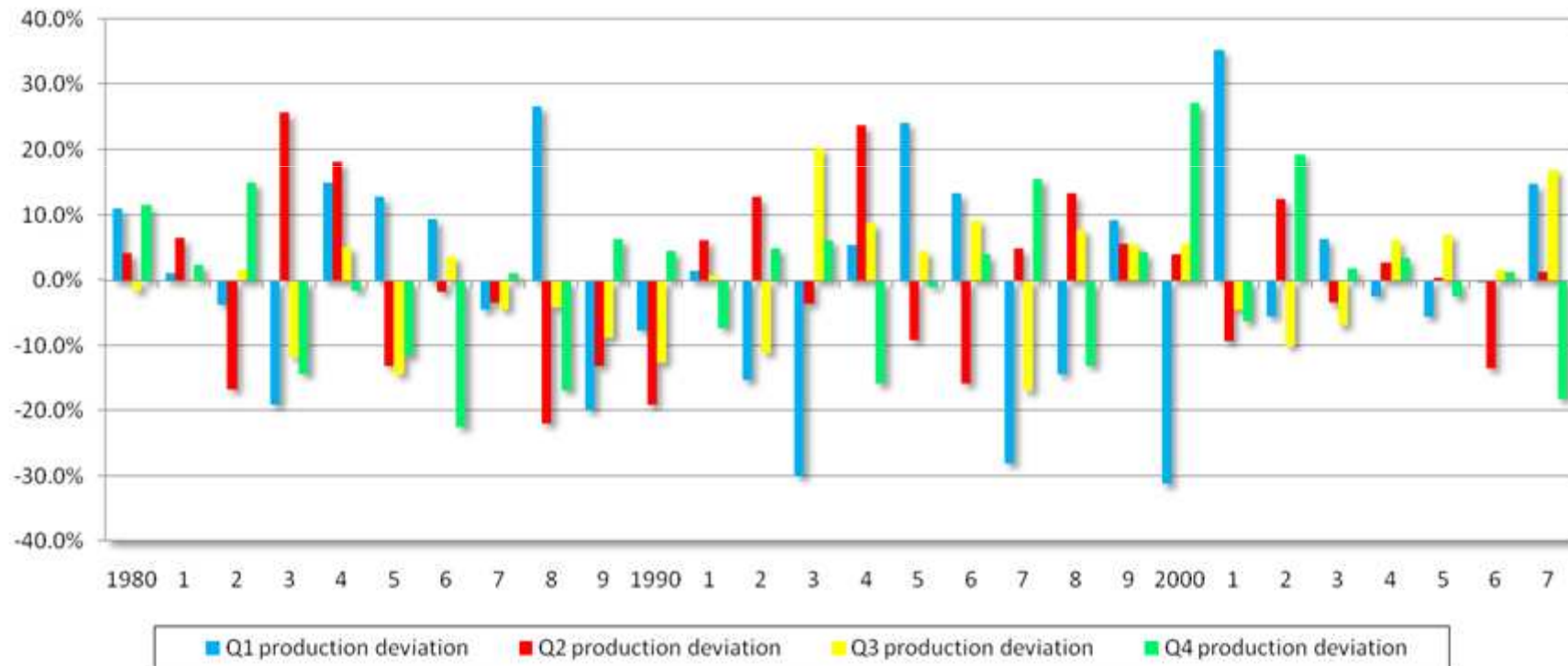
Energy monthly variability around 40%



# Wind variability

Energy quarterly variability around 20%

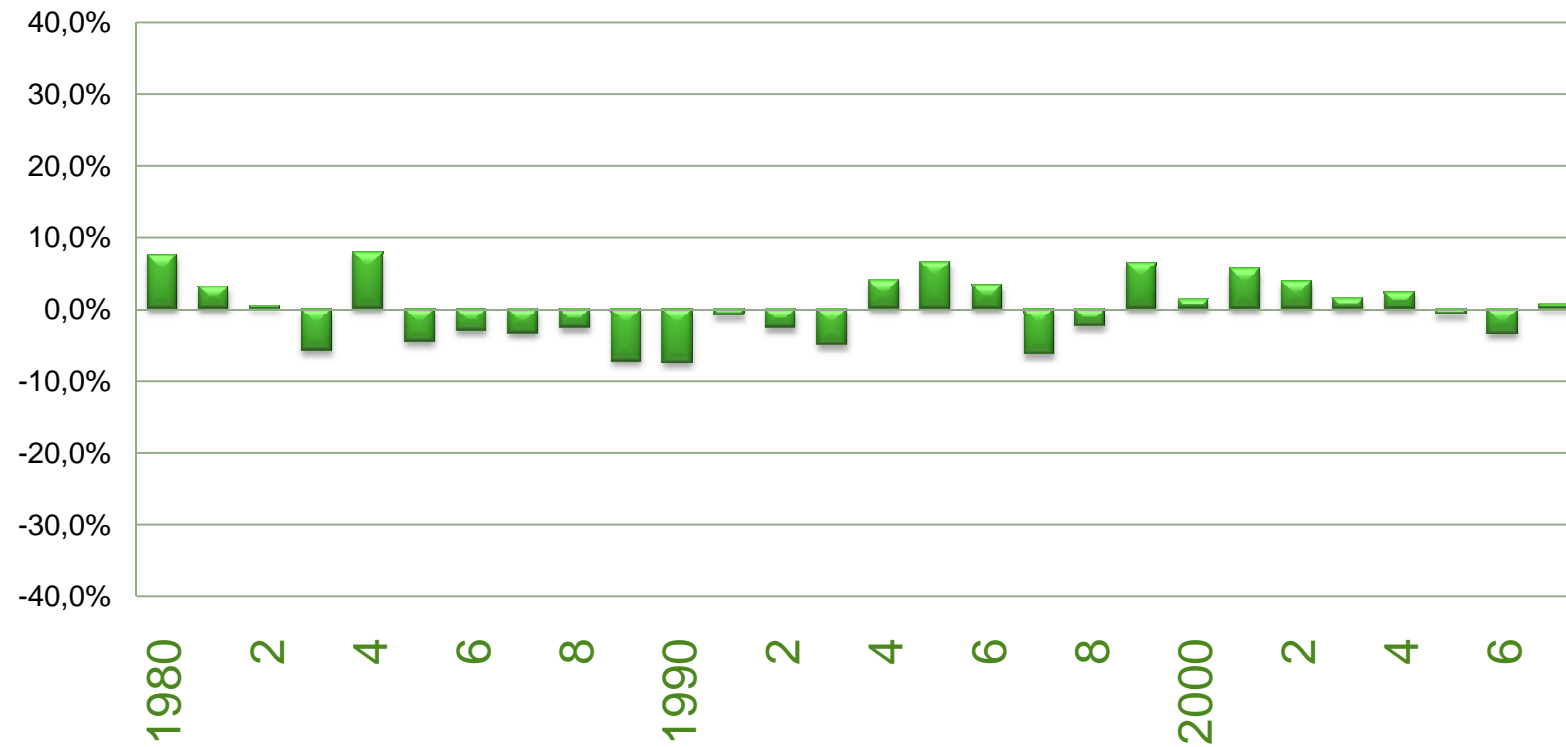
## Quarterly production deviation



# Wind variability

Energy annual variability around 10%

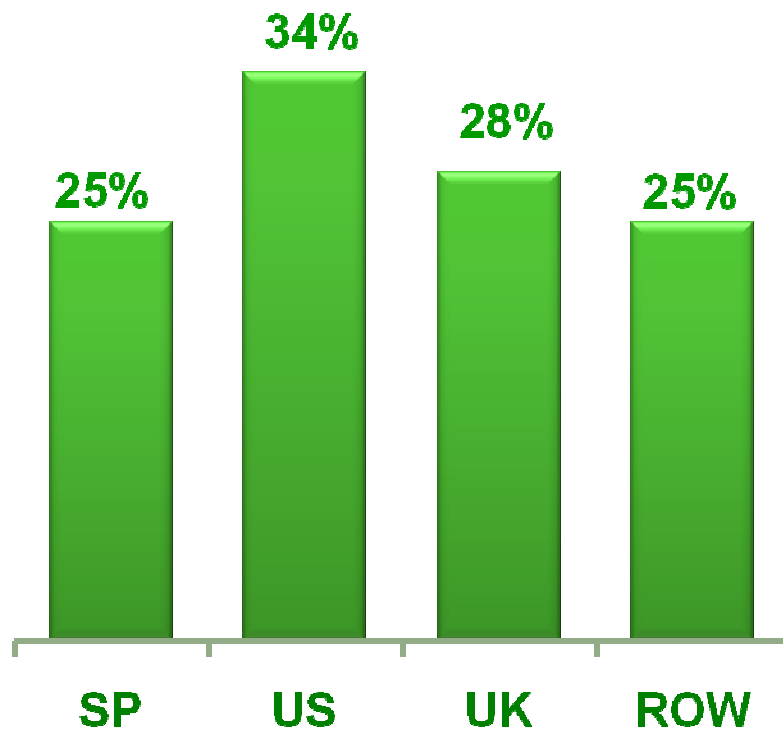
## Annual production deviation



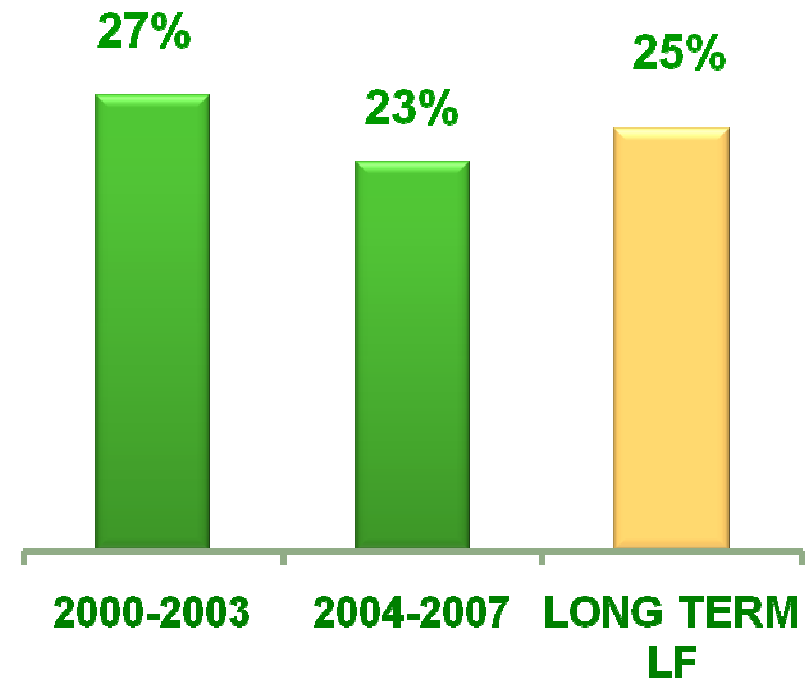
# Wind Loadfactors

Loadfactors will remain constant in the strategic plan period...

Loadfactors per region



Loadfactors in Spain



.... Based in a project basis analysis

# Agenda



## **Methodology for Wind Resource Assessing**

### **Wind Variability**

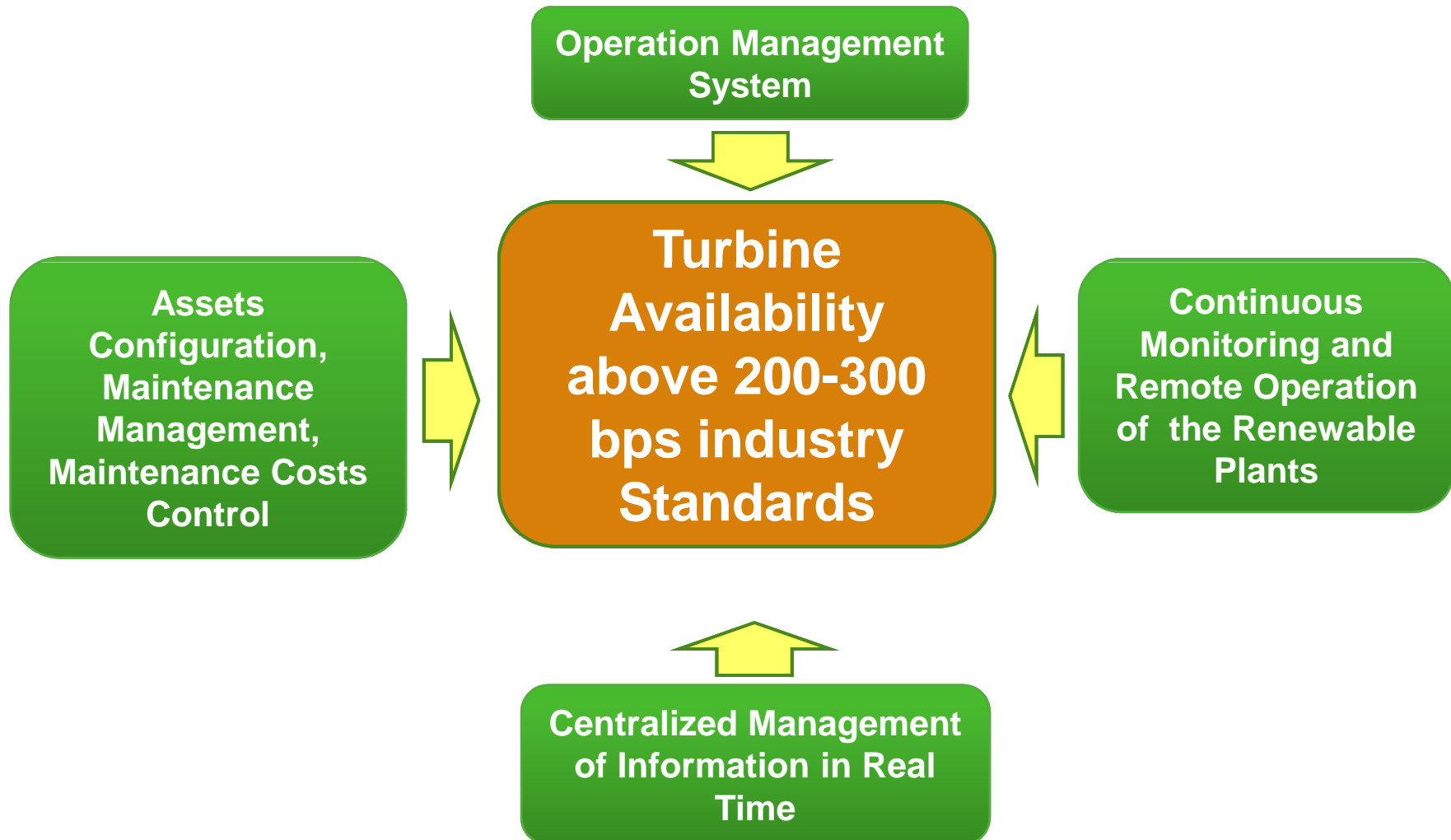
---

### **O&M Model and OPEX**

---

# Best in Class O&M Model

Ensures the highest possible quality, maximum efficiency and longest possible asset life



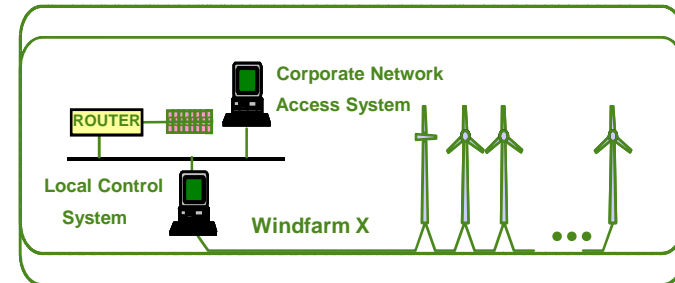
# Best in Class O&M Model

**Aimed to control and preserve independence throughout the sourcing and maintenance process in order to ensure long-term sustainability of profitability**

## Operation and Maintenance

### 1<sup>st</sup> Level

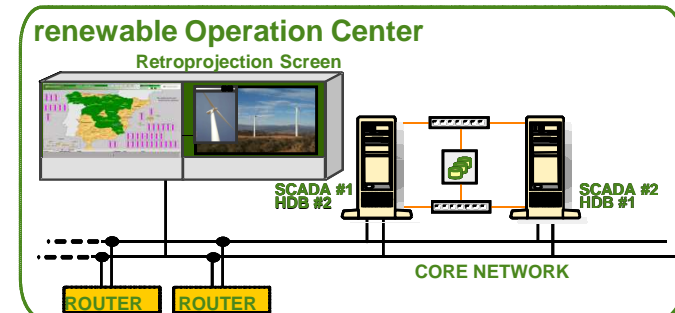
- Physical supervision
- Local operations
- Detailed maintenance planning
- Maintenance
- Supervision of third party suppliers



## Control of Operations (CORE)

### 2<sup>nd</sup> Level

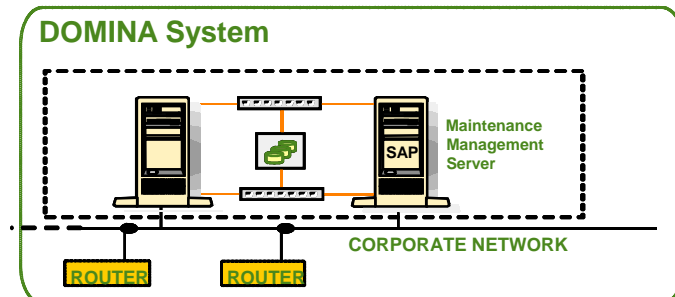
- Operating experience
- Remote supervision
- Remote and centralised operations (24x7)
- Communication between offices
- Management of support / urgency teams
- Management of CORE



## Technical Services

### 3<sup>rd</sup> Level

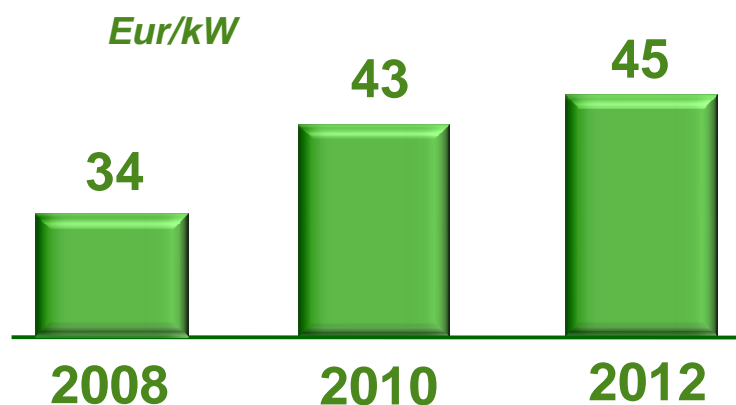
- Analysis of performance
- Control of production and billing
- Consolidated operating information
- Management operating systems (i.e. prediction)



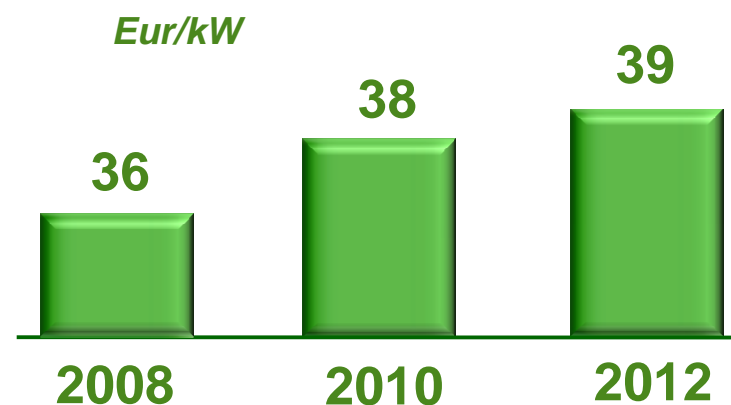
# Wind OPEX ex promotion costs

## Forecasted evolution per region

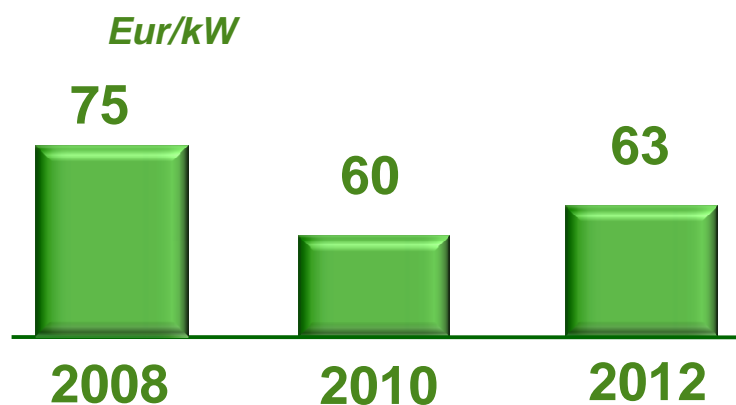
### Spain OPEX



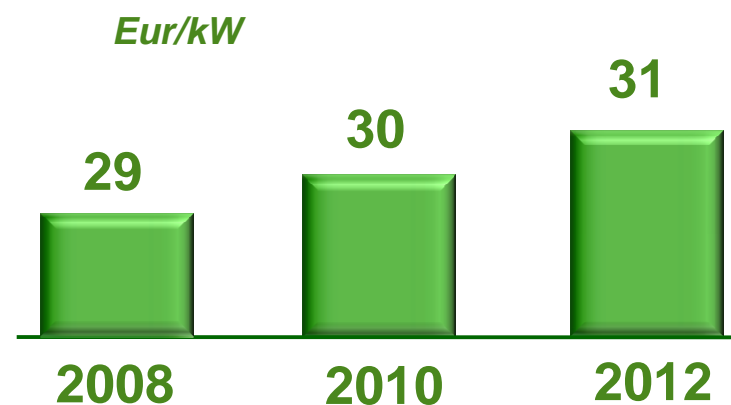
### US OPEX



### UK OPEX



### ROW OPEX



\* Includes taxes